

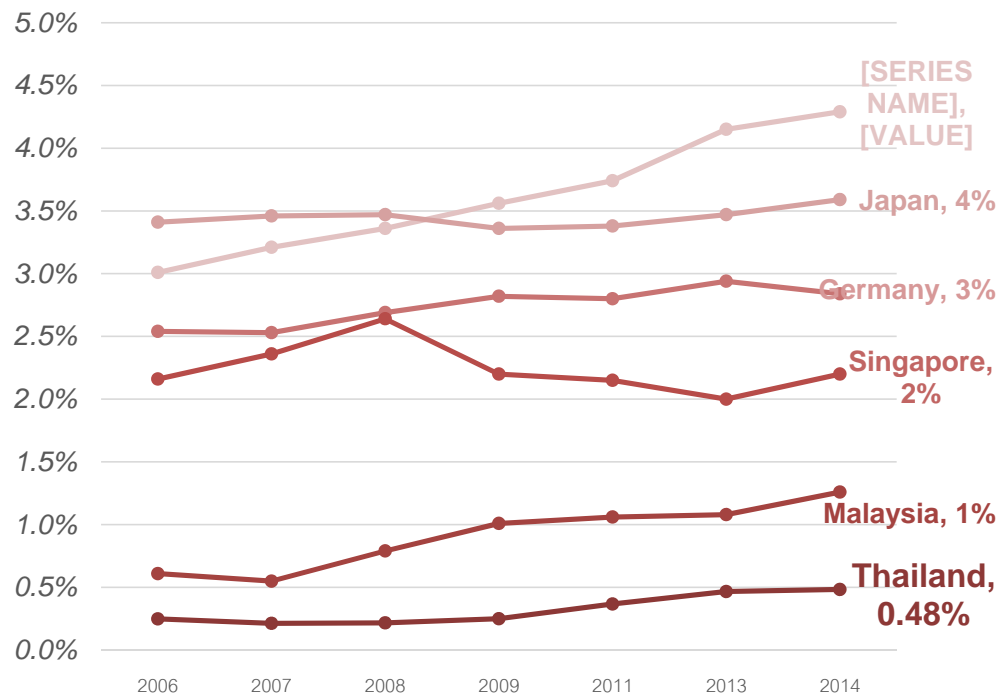


Kan Trakulhoon  
Director, SCG  
February 15, 2017

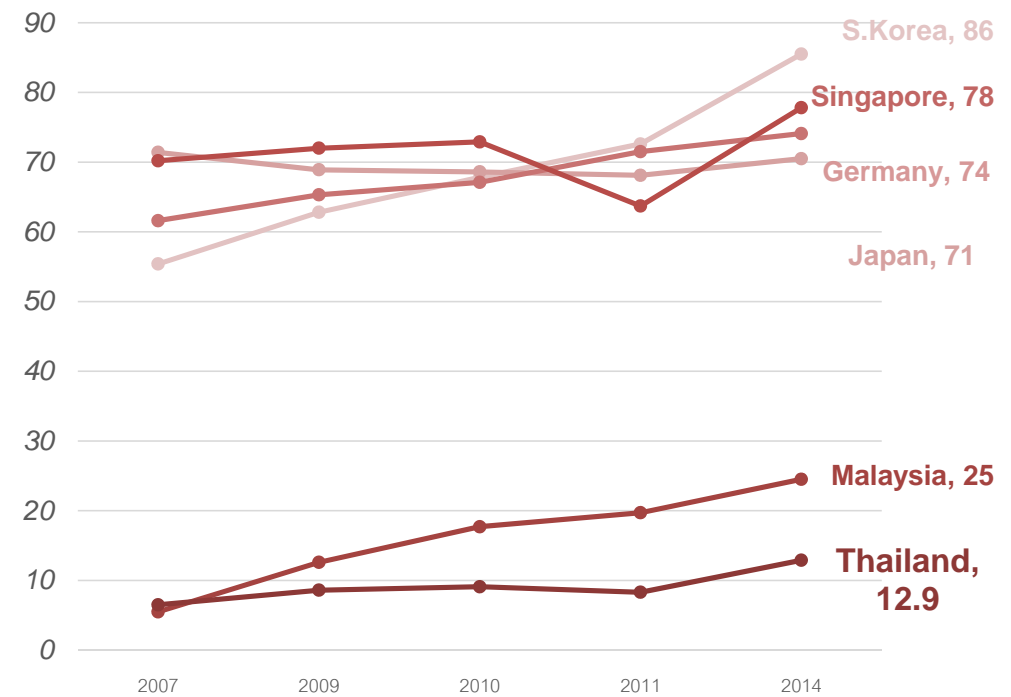
# Opportunity Thailand **HOW TO CREATE THAILAND 4.0?**

# Thailand Needs Much More Investment In R&D

Gross Expenditure on R&D as % of GDP

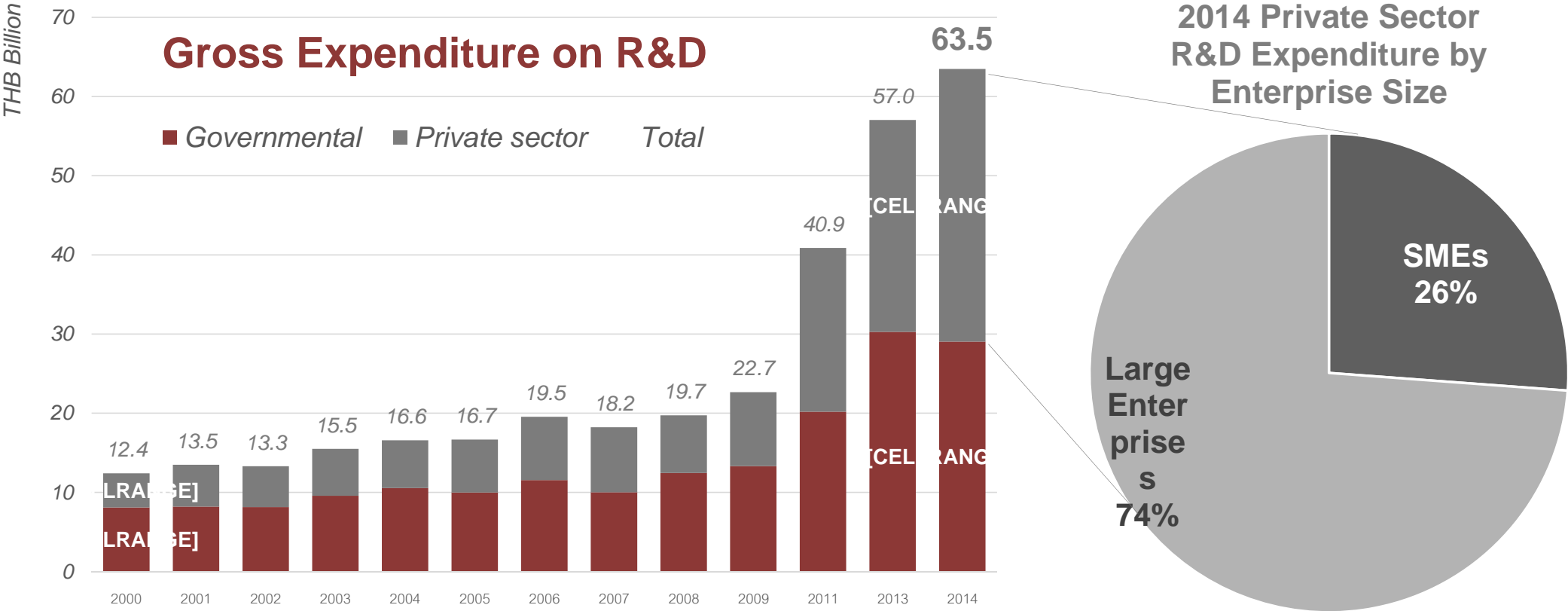


R&D Personnel working Full-Time Equivalent per 10,000 people



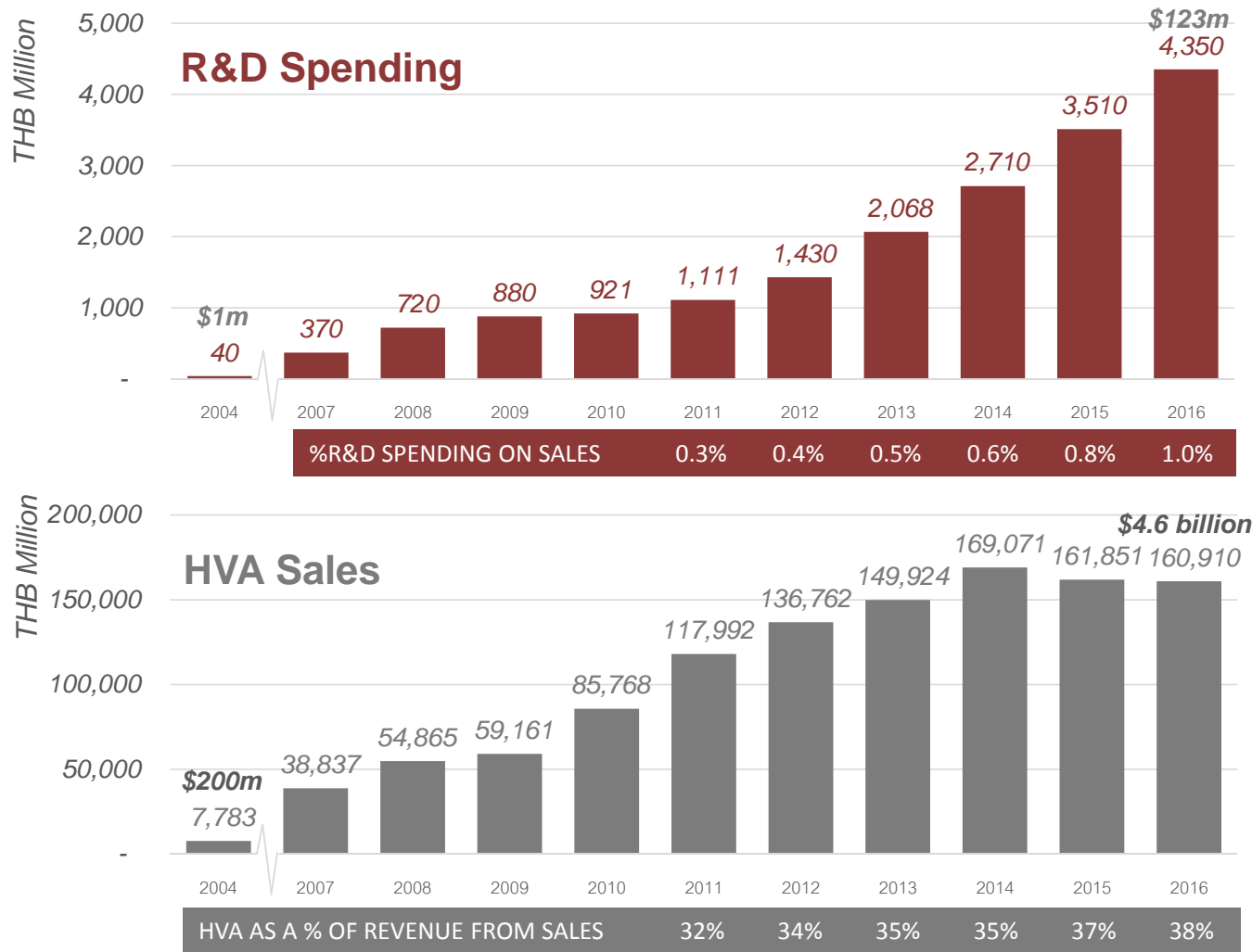
International Institute for Management Development (IMD), The World Competitiveness Yearbook 2011 - 2016

# Most R&D Was Contributed By Large Enterprises And Governmental

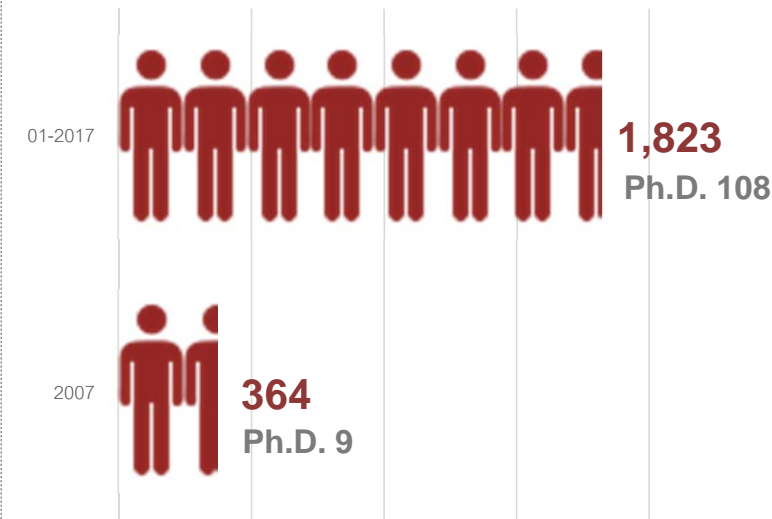


National Science Technology And Innovation Policy Office, *Thailand Science & Technology Indicators 2015*

# SCG Focuses R&D And HVA Products/Services



## R&D and Product Design Team



\*includes recent acquisition of Norner Group (Norway) :  
50 R&D staffs (10 Ph.D.)