



C.C.S. ADVANCE TECH CO., LTD.

## JOINING THE AEROSPACE SUPPLY CHAIN

**Aerospace OEM Components/Assembly  
manufacturing by 100% Thai owned company  
with 100% organic growth**



**Ketan pole, CEO**



# CCS GROUPS SUCCESSFUL GROWTH



JOURNEY FROM JOB  
SHOP TO AEROSPACE

2004

2005

Aviation Equipment supply

"Aerospace" CNC Components Mfg.

Plastic Injection Molding

"Aerospace" Jigs/ Cutting Tools

Cutting Tools Production

Metal Stamping Production

CNC Bar Turning Mass  
Production

Die/Mold Design & Mfg.

Punch/Die components Mfg.

Bearing Tooling, Jigs/fixtures  
Mfg.

CNC Machining Job Shop

1992

2009

MI 15 Lockheed Martin Top coat

Paint & Primer

Non\_Conventional Machining  
(Wire & Ram EDM)

Hard Chrome Surface  
Treatment

Electroless Nickel Surface  
Treatment

Passivation Surface Treatment

Anodize Surface Treatment

2014



AS 9000

ISO 9000



# C.C.S.ADVANCE TECH.CO., LTD.

## AEROSPACE DIVISION

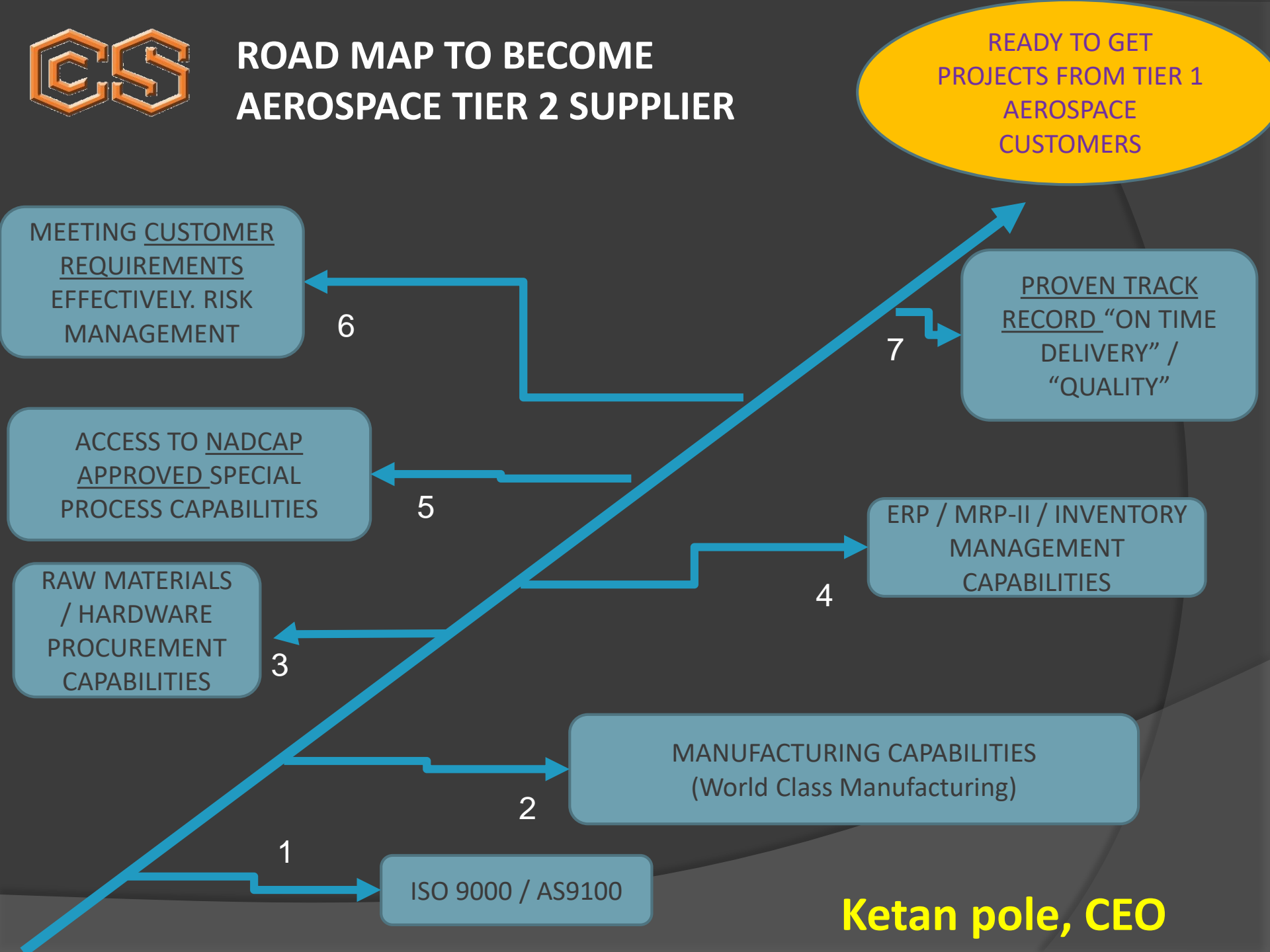
**FIRST 100% THAI OWNED COMPANY TO ACHIEVE  
THE FOLLOWING:**

- RECEIVED **AS9100** CERTIFICATION IN YEAR **2005**
- IMPLEMENTED **SAP ERP SYSTEM** IN SME CATEGORY, YEAR 2005, ALL KEY MODULES, **17 WEEKS** FROM KICKOFF MEETING.
- STARTED SUPPLYING DIRECT AEROSPACE PARTS TO **GE (UNISON)** IN THAILAND, **YEAR 2005 TO YEAR 2009**
- RECEIVED **NADCAP** CERTIFICATIONS IN **YEAR 2009**
- SUPPLYING PARTS TO **TIER 1&2 AEROSPACE CUSTOMERS** WHERE END CUSTOMERS ARE: ROLLS ROYCE, UTC, BOEING AND AIRBUS SINCE 2009
- 2014: WON THE **7 YEARS CONTRACT** TO SUPPLY PARTS/ASEMBLIES **OVER \$50 MILLION**. PROGRAMS INCLUDE: **777, 787, A320, A350, A380, C SERIES, MRJ, AUGUSTA WESTLAND AW139** ETC.
- RECEIVED AIRBUS SPECIAL PROCESS APPROVAL, DIRECTLY ARRANGED FROM AIRBUS





# ROAD MAP TO BECOME AEROSPACE TIER 2 SUPPLIER



**Ketan pole, CEO**



# WORLD CLASS SYSTEMS, ALL UNDER ONE ROOF



Airbus Qualification approvals for in-house Surface Treatments, Paints, Coatings, Filler, Sealant and Non Destructive Testing.



We run the best business practices  
Enterprise Resources Planning system



ISO 9001:2008 Certified



AS9100:2009 Certification

First 100% Thai company to receive Aerospace AS9100 certification.



Anodize, Passivation, Chemical Conversion, Chrome Plating,  
Electro less Nickel, Primer, Dry (Solid) Film Lube, Welding and  
Fluorescent Penetrant Inspection



ISO/IEC17025:2005 Certification (13 Jul 2010)





# C.C.S.ADVANCE TECH.CO., LTD.



*In accordance with Airbus Procedure AP5270, this attestation is granted to*

**C.C.S. ADVANCE TECH. CO., LTD.**

**54 2 MOO 9 SOI KANTANA**

**BANGYAI**

**11140**

**Thailand**

*This attestation demonstrates recognition of Airbus Qualifications for :*

**02 Surface Treatments**

**05 Paints, Coatings, Filler, Sealant**

**Non Destructive Testing**

*Note : saying that the real qualification data base is the official QSPL data base published at [www.airbus.com](http://www.airbus.com) on the Airbus Qualified Special Process List (QSPL) at the issuance date of this attestation.*

*Supplier ID: 309888*

*Attestation Issuance date: 05 Sep 2016 14:04*

AN AIRBUS GROUP COMPANY

Capit support:  
[qspl-support.procurement@airbus.com](mailto:qspl-support.procurement@airbus.com)

AIRBUS S.A.S.  
SOCIÉTÉ PAR ACTIONS SIMPLIFIÉE  
AU CAPITAL DE 2.704.575 EUROIS  
581 871 804 R.C.S. TOULOUSE

SIEGE SOCIAL :  
1 BOND PONT MAURICE BELLOUET  
31707 BLANZAC CEDEX - FRANCE  
PHONE +33 (0)5 61 99 33 33



## AEROSPACE\_AS DIVISION (BUSINESS PARTNERS)



Goodrich & Hamilton Sundstrand



- Meggitt Sensing Systems
- Vibrometer UK
- Vibrometer France
- Vibrometer Switzerland
- Sensorex\_France
- Xiamen China
- Meggitt Aircraft Braking Systems
- Meggitt Fuelling Systems
- Meggitt Fluid Control Systems



# C.C.S. ADVANCE TECH. CO., LTD

**CCS MANUFACTURED  
COMPONENTS ARE  
FLYING**

Sensing  
systems

Nacelle  
systems

Interior systems  
(Seating / Interior .  
Exterior lighting  
systems)

Actuation  
systems



Air  
Management  
systems

Braking  
systems

Cargo  
systems





# C.C.S. ADVANCE TECH. CO., LTD

## COMPUTER AIDED DESIGN AND COMPUTER AIDED MANUFACTURING (CAD/CAM)





# C.C.S. ADVANCE TECH. CO., LTD

CNC SCREW MACHINING / BAR TURNING  
UP TO 10-AXIS, DIAMETERS FROM 1MM UP TO 32 MM







# C.C.S. ADVANCE TECH. CO., LTD

**HIGH TECHNOLOGY COMPUTERIZED NUMERICAL  
CONTROLLED MACHINES  
(SWISS, JAPAN, KOREA, TAIWAN)**





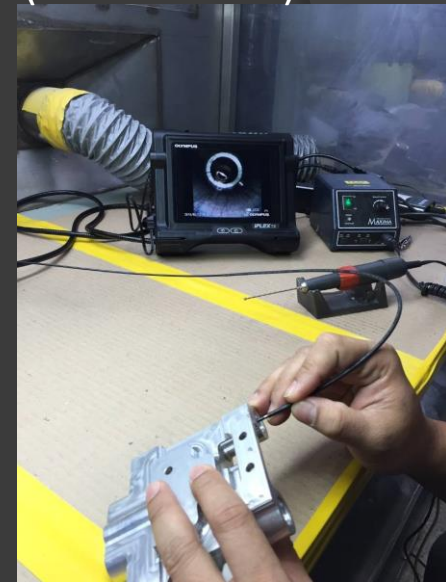
# C.C.S. ADVANCE TECH. CO., LTD

## QUALITY INSPECTION & ASSURANCE

3- CNC COORDINATE MEASUREMENT  
MACHINES ZEISS, GERMANY



DEBURRING BOOTH  
WITH SPECIAL VIDEO  
SCOPE  
(BORE SCOPE).







# C.C.S. ADVANCE TECH. CO., LTD

## QUALITY INSPECTION & CONTROL

Video Measurement



Laser Marking & Electro\_  
Chemical Marking



Optical Comparators



Roundness Measurement



Contour Measurement



Tool Maker's  
Microscope



Surface Roughness  
Measurement







# C.C.S. ADVANCE TECH. CO., LTD

## INHOUSE NADCAP APPPROVED SPECIAL PROCESSES

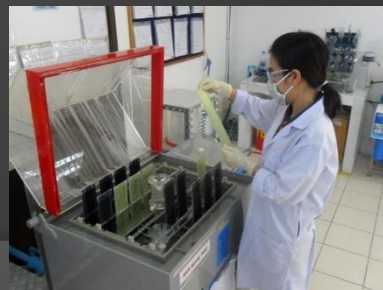
### PROCESSES ACCREDITED:

- **CHEMICAL PROCESSING**

1. SULFURIC ACID ALUMINUM ANODIZING
2. CHEMICAL CONVERSION COATING(ALODINE PROCESS)
3. STAINLESS STEEL PASSIVATION
4. ELECTROLESS NICKLE PLATING ON STEEL
5. HARD CHROME PLATING
6. PAINT/PRIMER/DRY FILM LUBE APPLICATION
7. CHROMIC ACID ANODIZE

- **NDT(FPI)**
- **Ndt (MPI .**

- **NME (EDM/WEDM)**





# C.C.S. ADVANCE TECH. CO., LTD



## FLUORESCENT PENETRANT INSPECTION PROCESSES



### Nadcap Accreditation Scope

- AC7114 Rev C - Nadcap NonDestructive Testing (NDT) Suppliers Accreditation Program Audit Criteria
- AC7114/1 Rev C - Nadcap Audit Criteria for NonDestructive Testing Facility Penetrant Survey



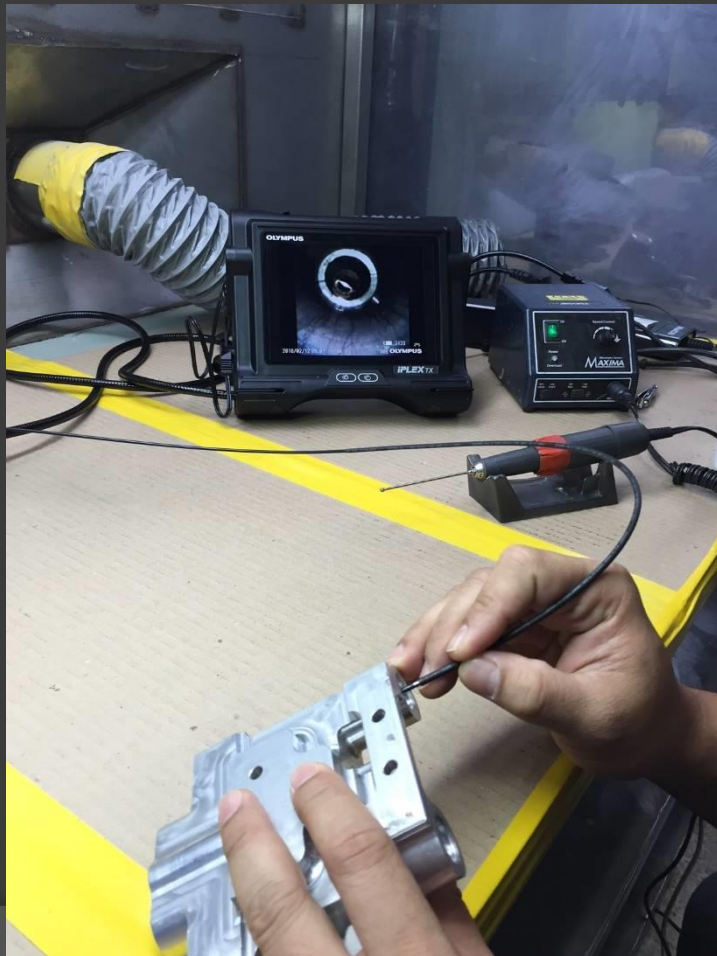




# C.C.S. ADVANCE TECH. CO., LTD

**DEBURRING BOOTH WITH SPECIAL VIDEO SCOPE (BORE SCOPE),  
INTRICATE HOLES DEBURRING AT INTERSECTION OF CROSS HOLES OF  
MANIFOLDS, HOUSINGS ETC**

16





# C.C.S. ADVANCE TECH. CO., LTD



NSC-TISI-TIS17025  
CALIBRATION 0172

## WORLD CLASS GAGE CALIBRATION ACCREDITED LABORATORY ISO/IEC 17025

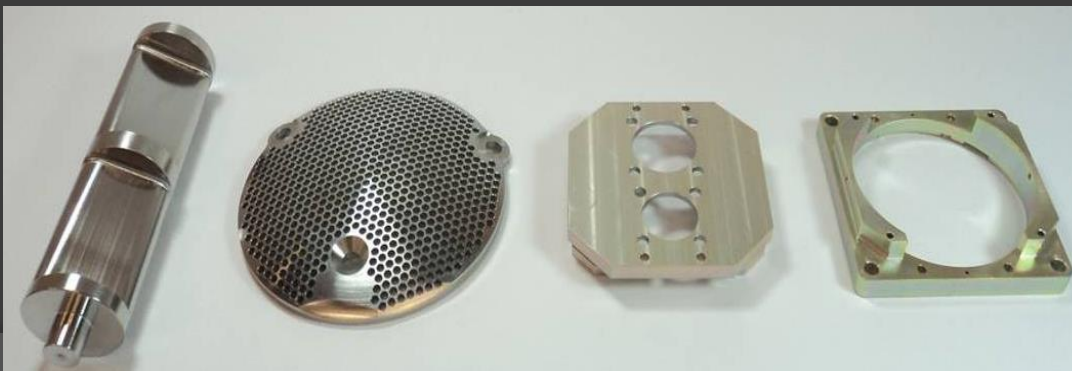




# C.C.S. ADVANCE TECH. CO., LTD

COMMERCIAL AIRCRAFT PROGRAMS: BOEING 777, 737, 787, AIRBUS A320, A350, A380, BOMBARDIER C SERIES, MITUBISHI MRJ AND AUGUSTA WESTLAND AW139

## AEROSPACE PARTS: MANUFACTURED IN\_HOUSE



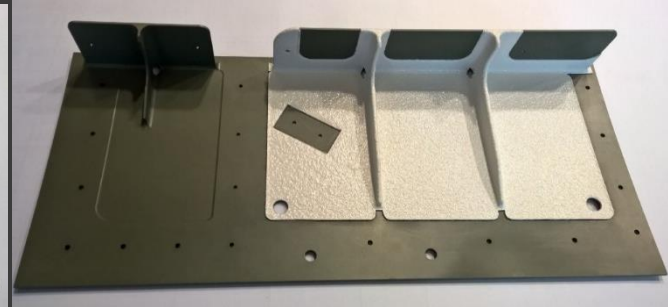




# C.C.S. ADVANCE TECH. CO., LTD

## AEROSPACE PARTS: MANUFACTURED IN\_HOUSE

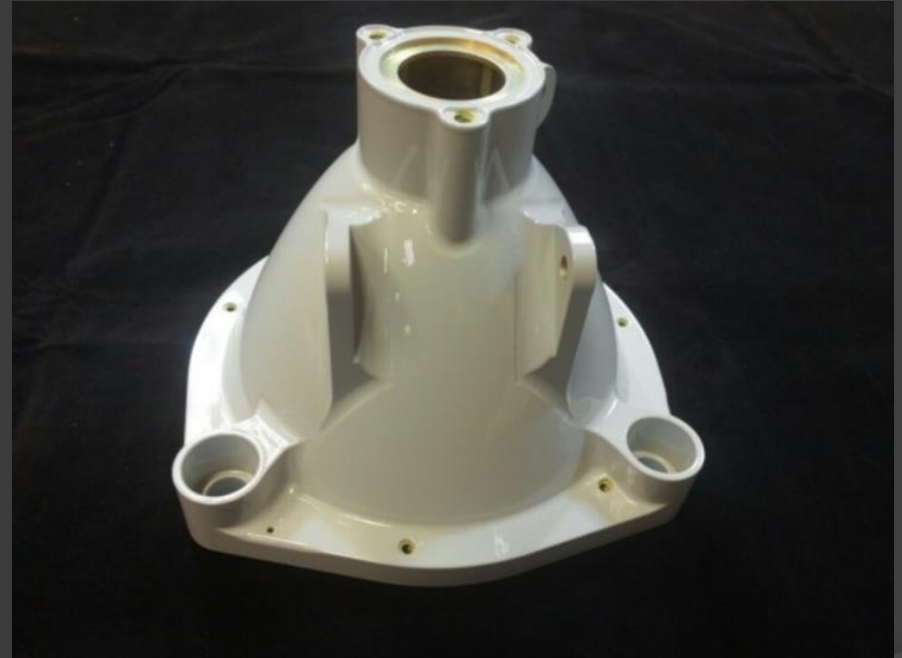
COMMERCIAL AIRCRAFT PROGRAMS: BOEING 777, 737, 787, AIRBUS A320, A350, A380, BOMBARDIER C SERIES, MITSUBISHI MRJ AND AUGUSTA WESTLAND AW139





# C.C.S. ADVANCE TECH. CO., LTD

## AEROSPACE PARTS: MANUFACTURED IN\_HOUSE

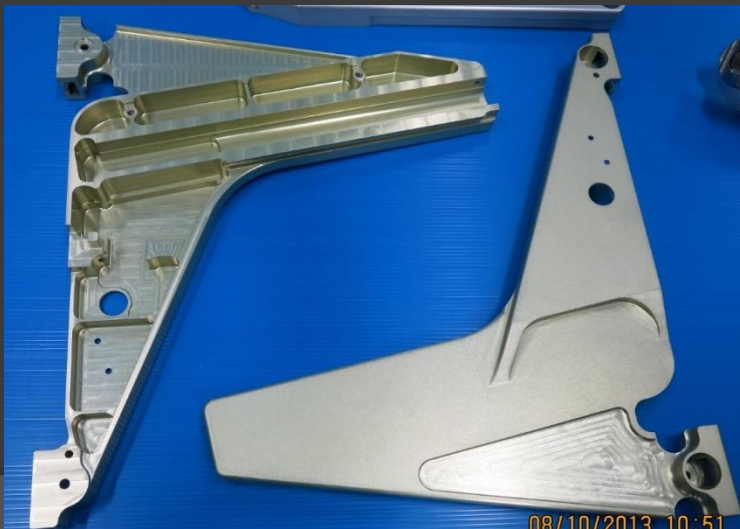
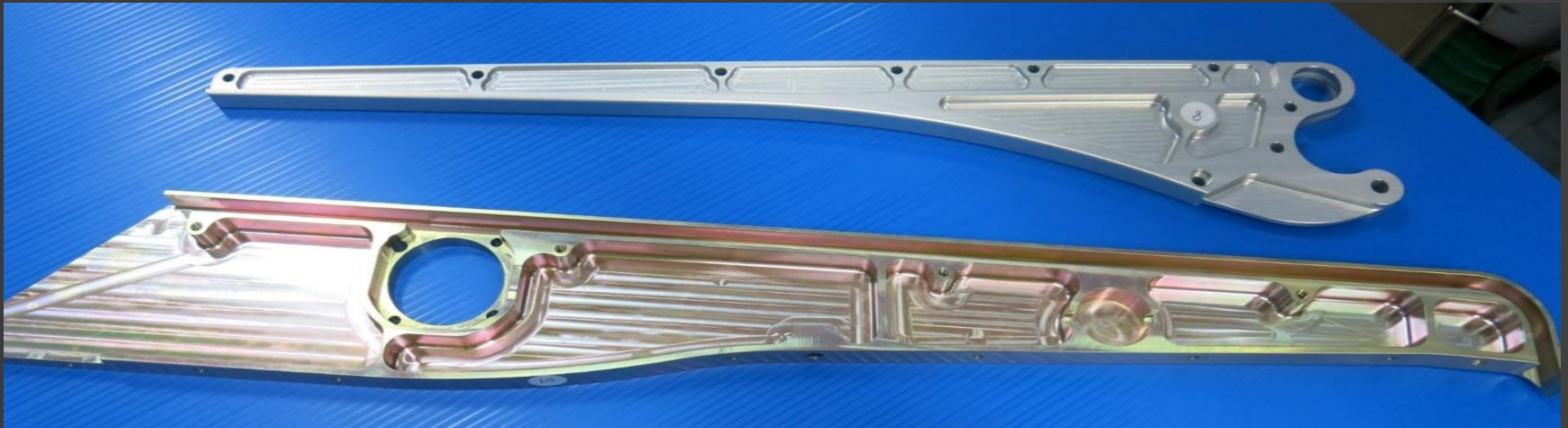




# C.C.S. ADVANCE TECH. CO., LTD

COMMERCIAL AIRCRAFT PROGRAMS: BOEING 777, 737, 787, AIRBUS A320, A350, A380, BOMBARDIER C SERIES, MITUBISHI MRJ AND AUGUSTA WESTLAND AW139

AEROSPACE PARTS: MANUFACTURED IN\_HOUSE



08/10/2013 10:51



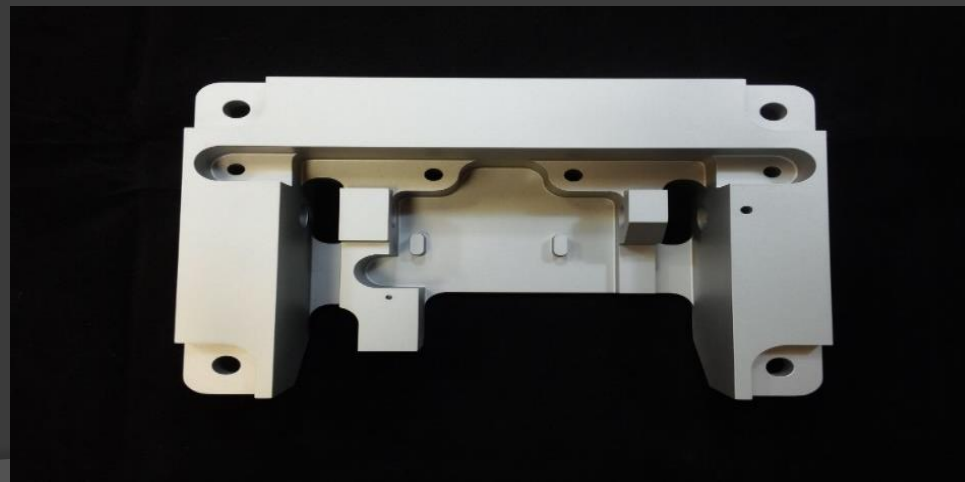
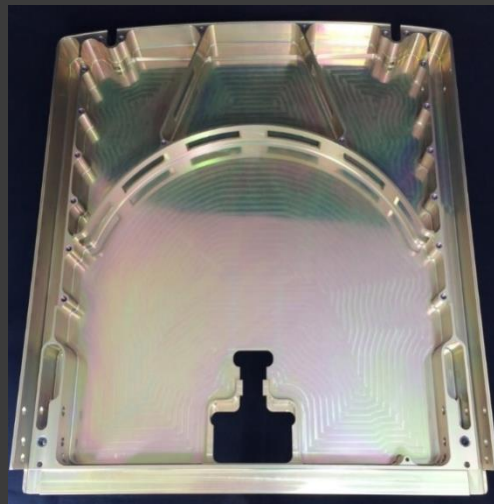
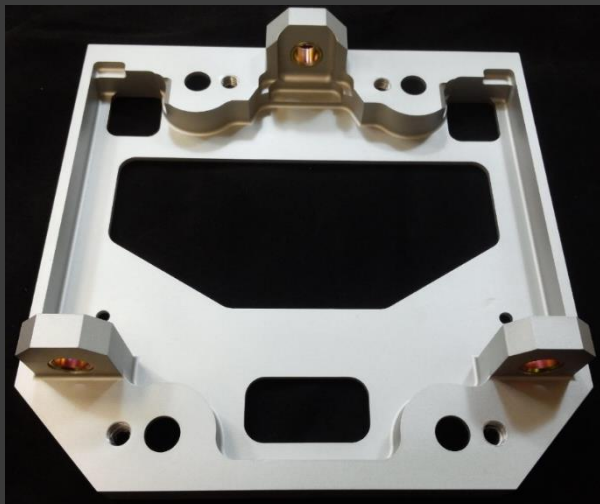




## C.C.S. ADVANCE TECH. CO., LTD

COMMERCIAL AIRCRAFT PROGRAMS: BOEING 777, 737, 787, AIRBUS A320, A350, A380, BOMBARDIER C SERIES, MITUBISHI MRJ AND AUGUSTA WESTLAND AW139

AEROSPACE PARTS: MANUFACTURED IN\_HOUSE





# PLASTIC INJECTION MOLDING PRODUCTION



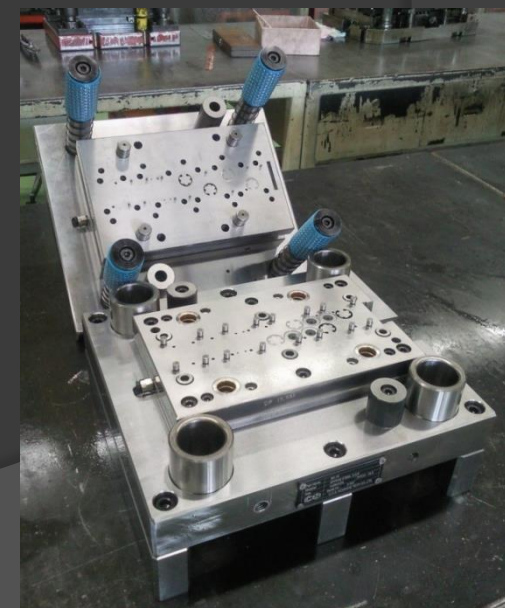
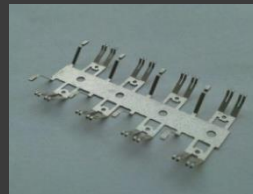
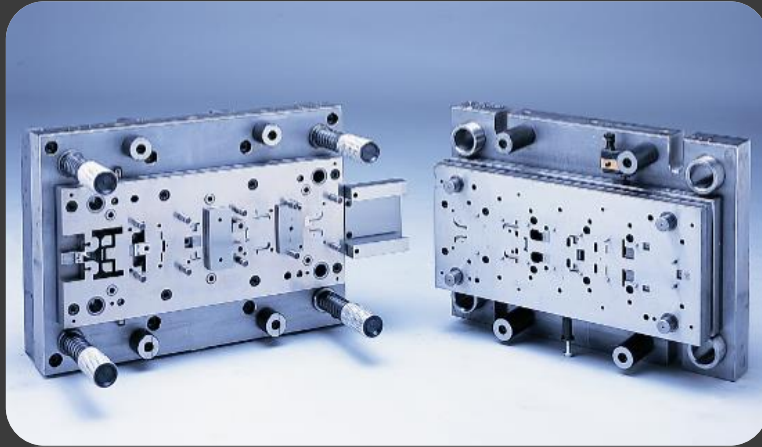
50 tons, 100 tons and 180 tons







# METAL STAMPING DIES/TOOLS DESIGN & MANUFACTURING



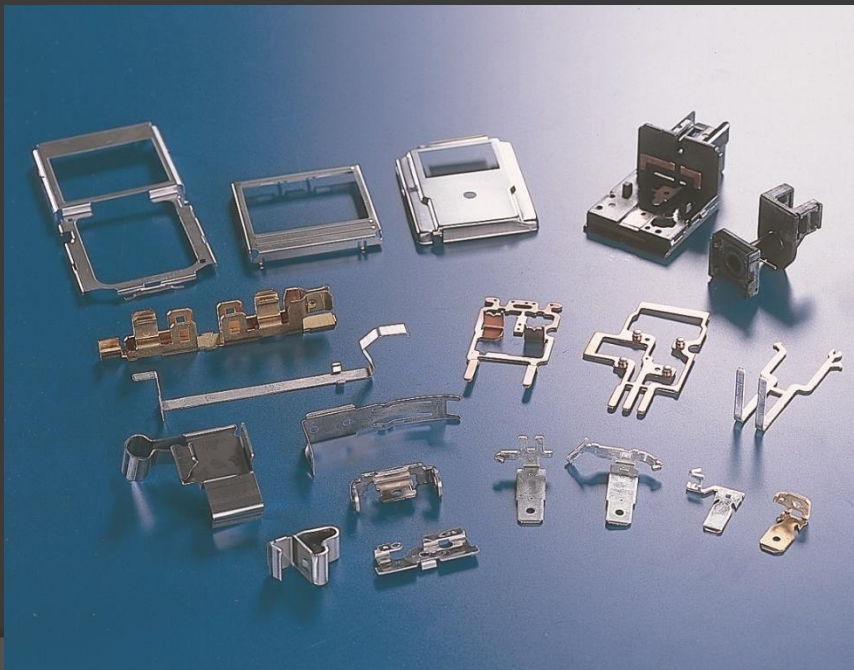


# SHEET METAL STAMPING PRODUCTION, 18 MACHINES MAIN SHOP

30, 60 Tons,  
Double Column Precision, high speed

35, 40, 45, 60, 110, 160 Tons C frame

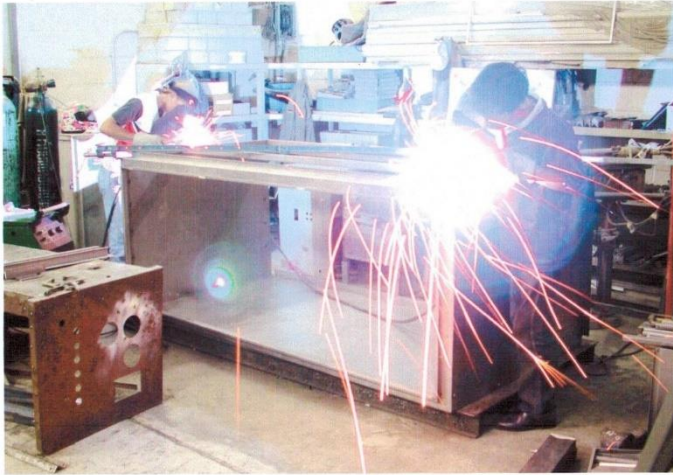
160 Tons Double Crank, Double Column,  
250 Tons Double Column





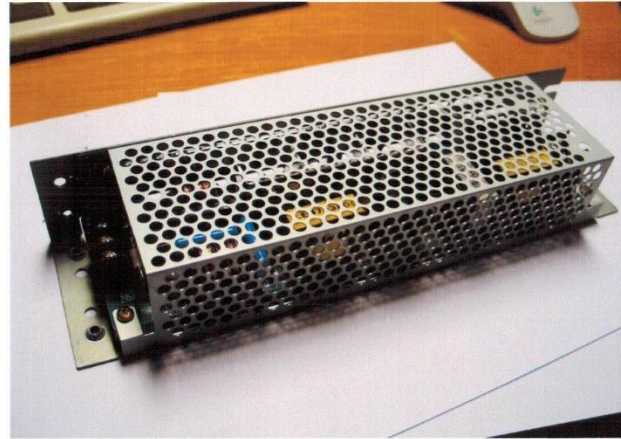


# C.C.S. ADVANCE TECH. CO., LTD





# C.C.S. ADVANCE TECH. CO., LTD





C.C.S. ADVANCE TECH. CO., LTD

# Thank you