



DIGITAL PARK THAILAND

A Flagship Project of The Eastern Economic Corridor



@ SRIRACHA

Chachoengsao

Chonburi

Rayong

Ministry of Digital Economy and Society

DIGITAL PARK THAILAND

@ SRIRACHA

Thailand Ultra High Broadband Strategic Area

Data Exchange International Gateway (One Belt One Road)

Connectivity Hub to CLMV

Suvarnabhumi Airport
(1.15 hrs)

Laem Chabang
Deep Sea Port (15 mins)

Pattaya City
(41 mins)

Pattaya- HuaHin Ferry Port
(38 mins)

Utapao Airport
(56 mins)

[1,137,600 sq.m.]

DIGITAL PARK THAILAND

- Motorway (Map Ta Phut)
Investment: 580 Million USD
- Double Track Railway (Map Ta Phut Port)
Investment: 1,822 Million USD
- High Speed Train (BKK - Rayong)
Investment: 4,471 Million USD
- 7 Industrial Estates



STRATEGIC AREA

Submarine Cable One Belt One Road

International Bandwidth (Gbps)
 Japan 5,600
 China-US 2,900
 Philippines 510
 HK-Malaysia 155



Hong Kong is internet route from US-South Asia and also known as APAC Gateway

Thailand is the strategic location for internet connectivity of AEC

Singapore is a content hosting of Southeast Asia due to submarine cable load capacity

Japan is the route of Asia Pacific-US, also named as US-Originated Traffic

Most of internet traffic comes from US which is expected to increase in exponential in the next few years



ASEAN High Way Route in Thailand



Linkage of Marine Transportation

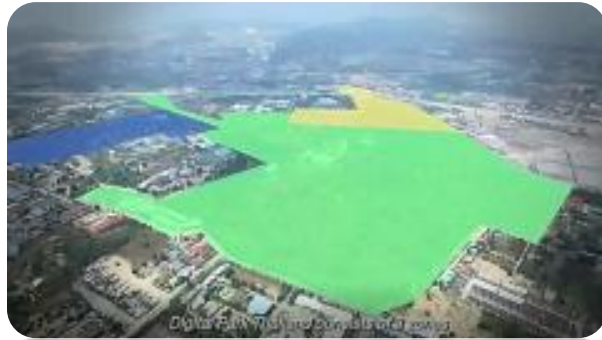
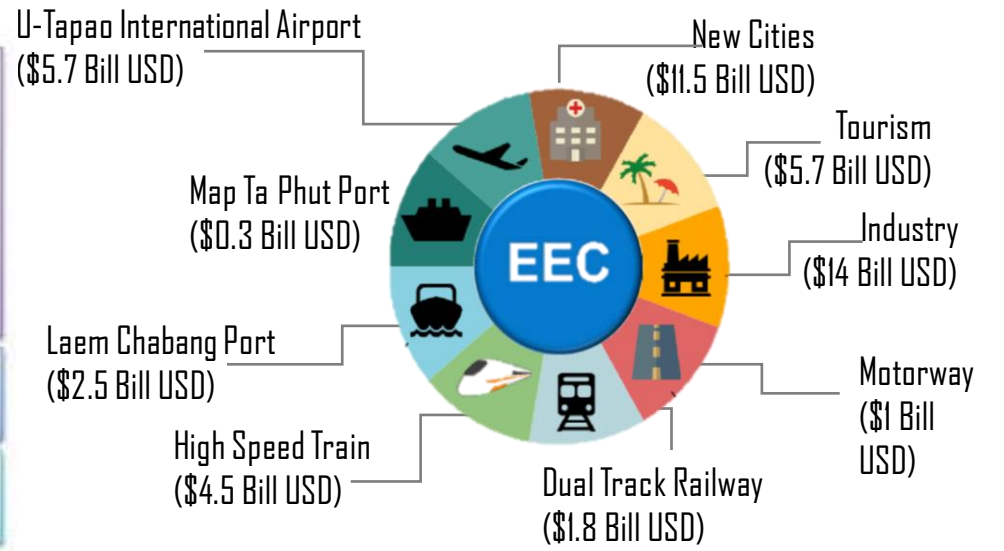


THAILAND EEC INITIATIVE

Digital Park is 1 of 5 High Priority Projects to Start in 2017



Combined Public and Private Investments
\$ 43 Billion USD in the first 5 years



DIGITAL PARK THAILAND

SRIRACHA SATELLITE STATION

DIGITAL PARK ECONOMIC IMPACT

Increasing GDP **฿ 113,000** mil./year



NEW S-Curve Industry

- Raising Digital Tech Startup avg. **100** entrepreneurs per year

- Improving digital workforce
100,000 jobs/year



Digital Workforce

Digital Investment **฿ 50,000** mil./year

Digital Investment



1

2

3

DIGITAL
IMPACT

4

5

Enhancing Big Data & AI
฿ 3,500 mil./year

Digital Industry

Transforming **54** Hardware
factories in EEC to smart device,
IoT and robotic
(**฿ 80,000** mil./year)

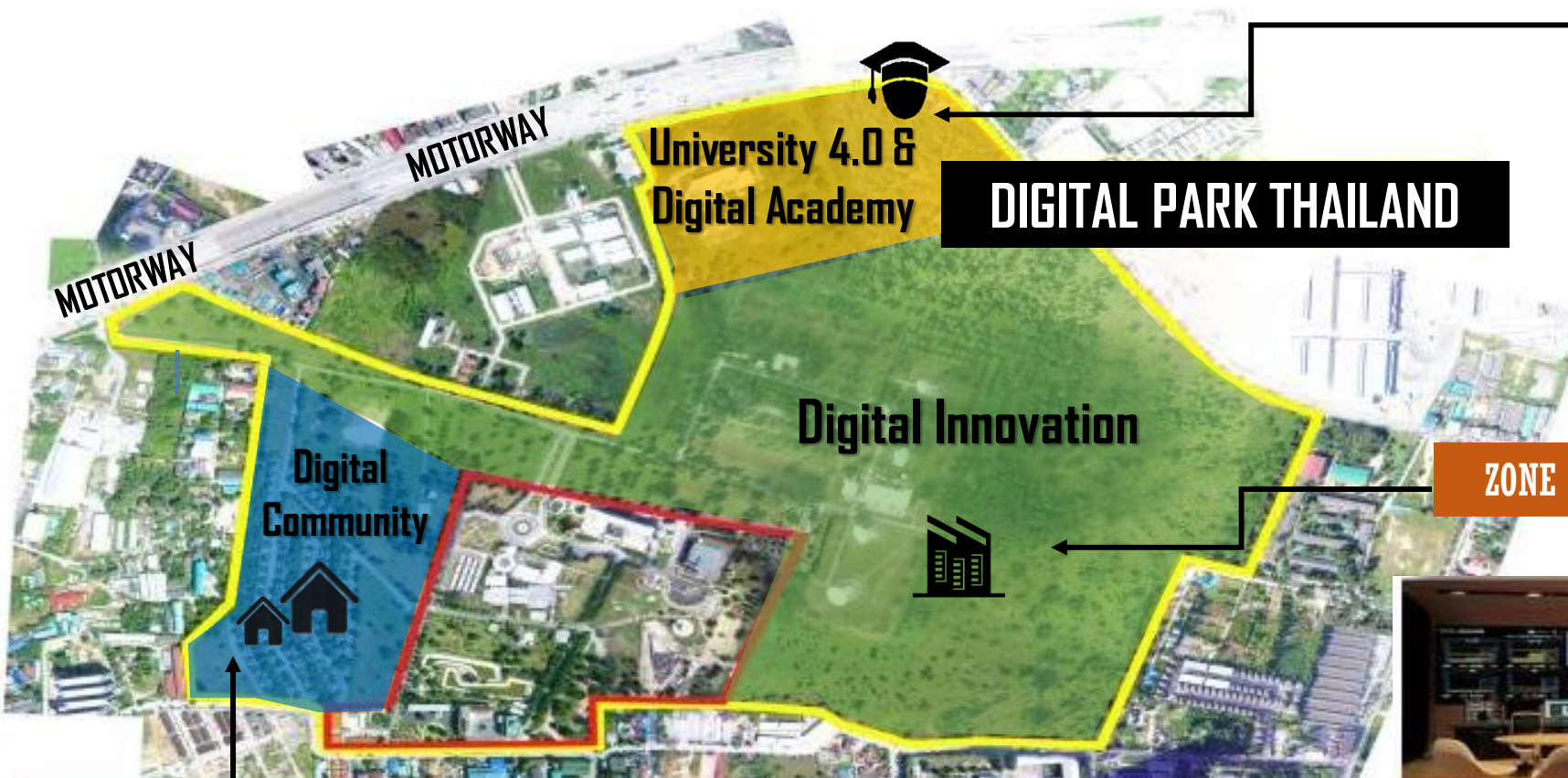
ASEAN Economics

Expanding multiply growth of
ASEAN trade



WHAT'S IN THE PARK

"Digital Park Thailand is the destination for global players and world-class digital nomads to **Invest-Work-Learn-Play**"



ZONE II : DIGITAL TALENT SPACE



ZONE I : PRIVATE SECTOR INNOVATION SPACE



ZONE III : SMART LIVING SPACE



CAT



✓ **Digital Industry Promotion**
[8 Digital Clusters]



- 1 Computer Hardware, Semi/Superconductor
- 2 Smart Device, IoT, Robotic
- 3 Big Data & AI
- 4 Intelligent Platform & Auto System
- 5 Immersive Content
- 6 Satellite & Broadcast
- 7 Future Ultra High BB
- 8 Digital Tech Startup

WHAT WE DO IN THE PARK

A MAGNET FOR DIGITAL INNOVATORS

✓ **Digital Nomad & Specialist Hang Out**



✓ **Connectivity Hub**



✓ **Global DigiTech Startup Networking**

EEC INCENTIVES

BOI Special Privileges

- 8 years corporate income tax waiver plus **50%** reduction for another 5 years
- Potential **15** years corporate income tax waiver plus grants for strategic projects in EEC (Thailand Competitive Fund)
- Potential maximum **17%** personal income tax for management, investor, expert of companies in target industries with HQ and facilities situated in EEC

Maximum Privilege

Physical Infrastructure

- Long-term land lease **50+49** years
- Fast track [Special PPP/EIA process]
- One Stop Service

EEC exclusives

- Free trade zone
- Non-tax incentives VISA + Work permit
- Financial incentives holding foreign currency account

DIGITAL PARK EXTRA INCENTIVES



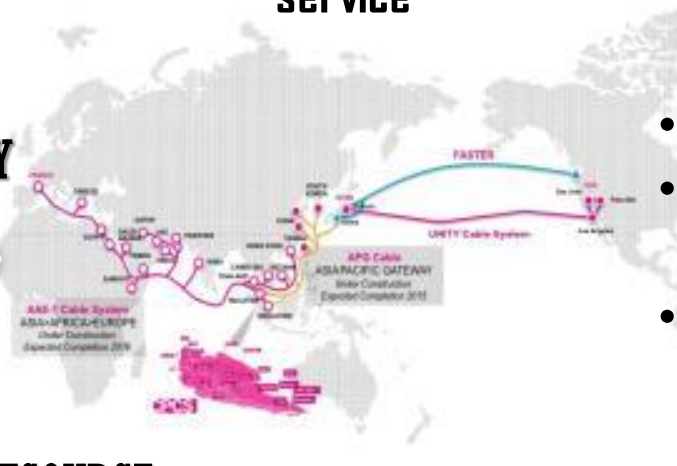
MORE EXCLUSIVE FOR DIGITAL INVESTOR IN THE PARK



INNOVATION

- Co-partner with local companies & global player to catalyst digital innovation
- Transform manufacturing in EEC to create demand for digital usage
- Matching grant/fund for innovation investment
- Special innovation zone with regulatory sandbox and one stop service

CONNECTIVITY



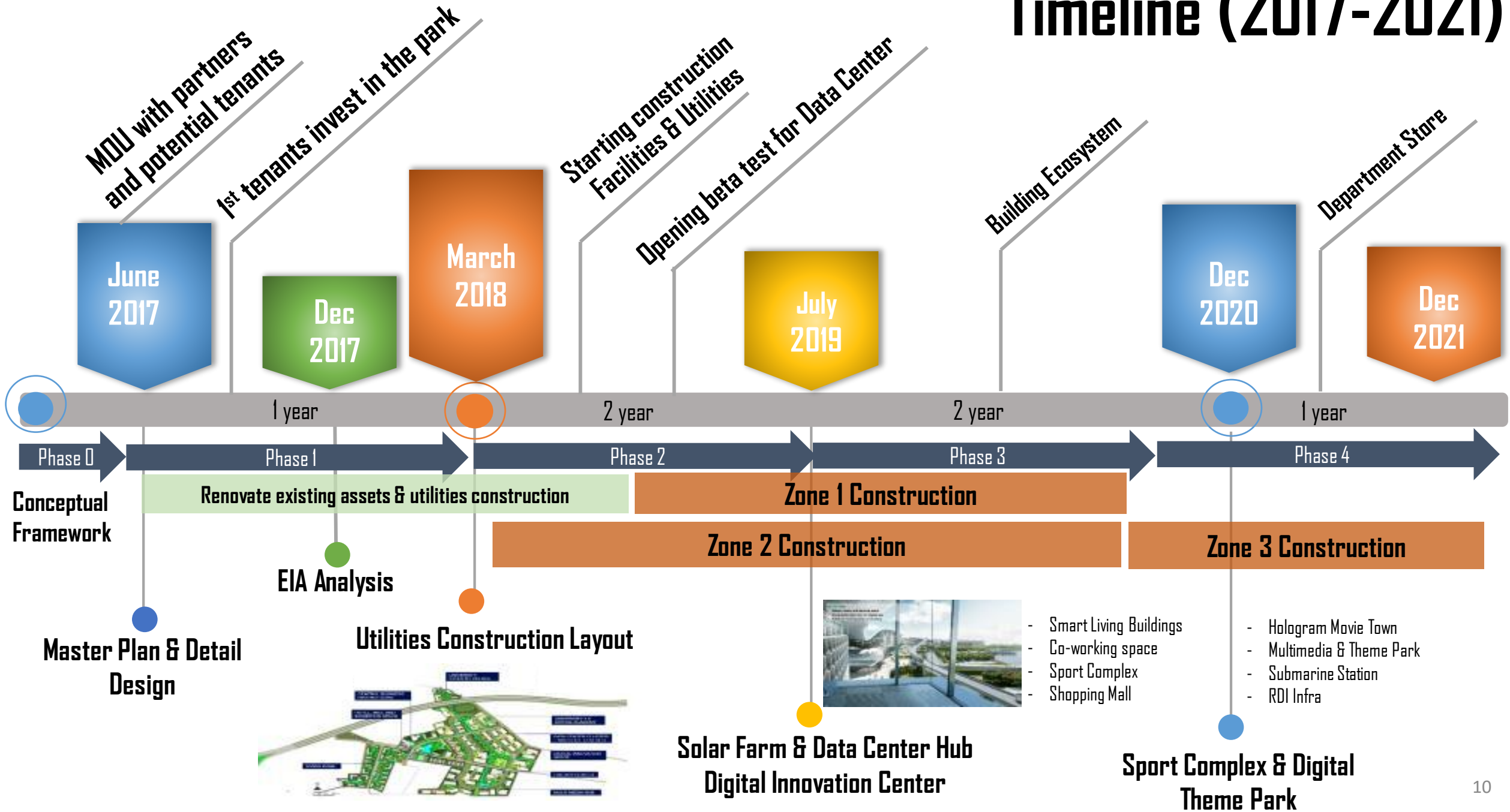
- Link biz communication to CLMV
- Invest in solar farm for Large Scale Data Center Hub
- Extra promotion for ultra high broadband usage



HUMAN RESOURCE

- Provide digital workforce for investors
- Matching Digital Tech Startup with real sector in EEC
- Create digital talent and community
- Hang out space for digital nomad and digital specialist
- Human cross border privilege for digital specialist and digital workforce

Timeline (2017-2021)



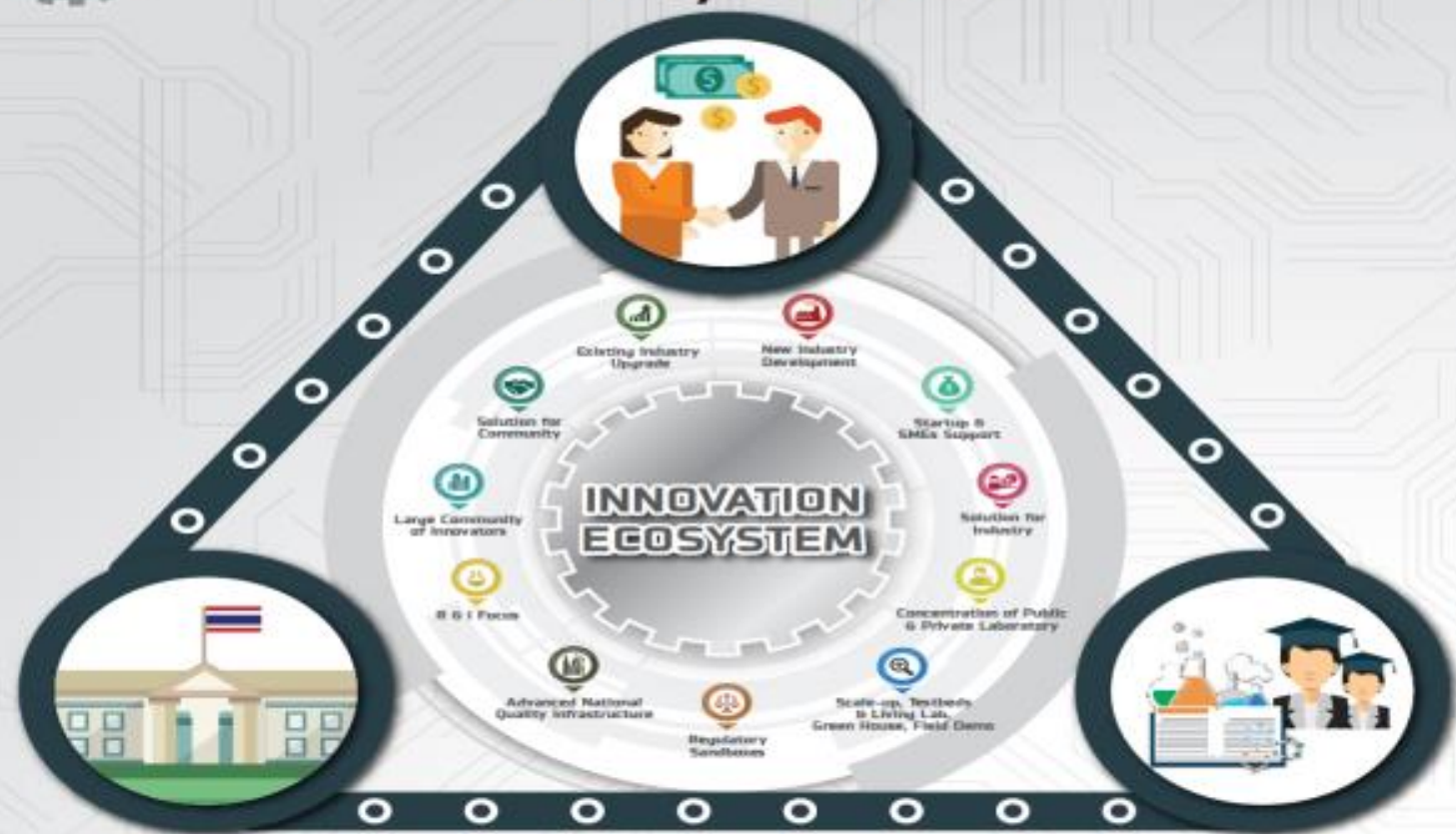
Eastern Economic Corridor of Innovation (EECi)



EASTERN ECONOMIC CORRIDOR OF INNOVATION (EECi)

The Eastern Economic Corridor of Innovation (EECi) is an initiative by the Ministry of Science and Technology to foster research and innovation activities in the Eastern Economic Corridor (EEC). Located within the EEC area, EECi will be a comprehensive innovation ecosystem, fueling Thailand's targeted industries through research and innovation, output generated from collaborations between the public, private, and academic as well as civic society sectors. Leading Thailand to a nation of Innovation, coupled with improving life's quality of local people as well as leading to Thailand 4.0 sustainable development.

Industry/Business



Government



Academia/
Research Institute

Community



EECi CONCEPTUAL MASTER PLAN

EECi by the Ministry of Science and Technology is a new innovation hub in the Eastern Economic Corridor of Thailand, suitable for setting up research and innovation centers of companies looking to expand their presence in the ASEAN technological market. EECi is a comprehensive innovation ecosystem. In the first phase, it will be composed of (1) National Quality Infrastructure for scientifically tested, validated, and evaluated assurance of product and service quality. (2) Translational Research Infrastructure such as, characterization and testing center and pilot plant. And (3) Research Development and Innovation for upgrading existing industries, developing new industries and giving solution for community both in EEC and other areas around the country. Three focus sectors of technology and industry in EECi are;

(1) ARIPOLIS: Research and Innovation Center of Automation, Robotic, and Intelligent System.

(2) BIOPOLIS: Research and Innovation Center of Bio-science and Bio-technology.

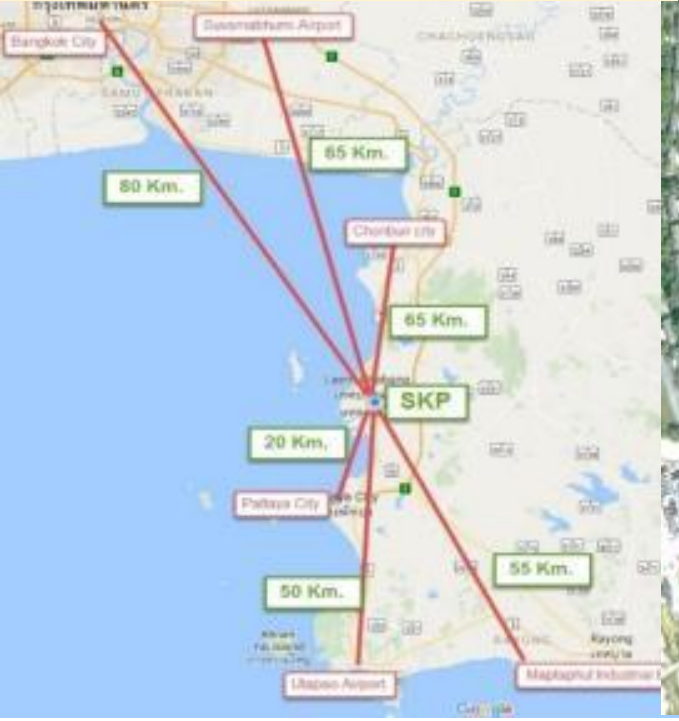
(3) SPACE KRENOVAPOLIS: Research and Innovation Center of Space technology and Geo-informatics.

EECi will include amenities such as living space, community and private space, meeting place, fitness center, green area, hotels and schools, as well as public utilities and facilities to support all innovators.



EECi Location: SPACE KRENOVAPOLIS at Sriracha, Chonburi & EASTERN INNOVATION DISTRICT

SPACE KRENOVAPOLIS (SKP)
 Sriracha, Chonburi
 By Geo-Informatics and Space Technology
 Development Agency (Public Organization)



EASTERN INNOVATION DISTRICT
 by National Innovation Agency (NIA)



JOIN US TODAY



DIGITAL PARK THAILAND

www.digitalparkthailand.org

